



EUCG Nuclear Book of Benchmarks

August, 2013



August 19, 2013

To: EUCG Nuclear Committee Management Sponsors, Primary Representatives, and Data Providers
Subject: EUCG Nuclear Book of Benchmarks

This is the first issue of the EUCG Nuclear Book of Benchmarks. It consists of industry data collected from each participating EUCG member company as of the May, 2013 comprehensive release. The EUCG Nuclear Book of Benchmarks report will be distributed on an annual basis. This report combines standard benchmark charts and tables summarizing nuclear performance across multiple performance dimensions of cost, staffing and operational performance.

The purpose of this report is to enhance the ability of member utilities to use industry performance data in their annual planning and target setting processes. The compiled report saves the company time so resources can be applied to analyzing their own plant(s) performance relative to the industry.

This package is customized for your company and displays your plant / unit names. We are sending this to each current EUCG Nuclear member company's Management Sponsor, Primary Representative and Data Provider. The Table of Contents displays the available benchmarks displayed in a graph format with the corresponding data on the succeeding page.

This first release has been issued to all U.S. members. Your feedback in regard to the report content is appreciated. I would ask that any questions / comments be compiled by your EUCG Primary Representative and then forwarded to me at the noted email address below.

Thank you for your continuing participation and support of EUCG.

David Ward, Jr.
EUCG Nuclear Committee Chair
704.382.4943; dr.ward@duke-energy.com



EUCG Nuclear Book of Benchmarks Table of Contents

- A. Cost Reports
 - i. Operating Cost (On-line + Outage - \$/MWh)
 - 1. Operating Cost – All Plants
 - a. 1 Year
 - b. 3 Year
 - 2. Operating Cost – Multi-unit Plants
 - a. 1 Year
 - b. 3 Year
 - 3. Operating Cost – Single-unit Plants
 - a. 1 Year
 - b. 3 Year
 - 4. Operating Cost – Fleet Plants
 - a. 1 Year
 - b. 3 Year
 - 5. Operating Cost – Non-Fleet Plants
 - a. 1 Year
 - b. 3 Year
 - ii. Operating Cost (On-line Only – \$/Installed Capacity)
 - 1. Operating Cost – All Plants
 - a. 1 Year
 - b. 3 Year
 - 2. Operating Cost – Multi-unit Plants
 - a. 1 Year
 - b. 3 Year
 - 3. Operating Cost – Single-unit Plants
 - a. 1 Year
 - b. 3 Year
 - 4. Operating Cost – Fleet Plants
 - a. 1 Year
 - b. 3 Year
 - 5. Operating Cost – Non-Fleet Plants
 - a. 1 Year
 - b. 3 Year
 - iii. Total Operating Cost (\$/MWh)
 - 1. Total Operating Cost – All Plants
 - a. 1 Year
 - b. 3 Year
 - 2. Total Operating Cost – Multi-unit Plants
 - a. 1 Year
 - b. 3 Year
 - 3. Total Operating Cost – Single-unit Plants
 - a. 1 Year
 - b. 3 Year
 - 4. Total Operating Cost – Fleet Plants
 - a. 1 Year
 - b. 3 Year



EUCG Nuclear Book of Benchmarks Table of Contents

- 5. Total Operating Cost – Non-Fleet Plants
 - a. 1 Year
 - b. 3 Year
- iv. Total Generating Cost (\$/MWh)
 - 1. Total Generating Cost – All Plants
 - a. 1 Year
 - b. 3 Year
 - 2. Total Generating Cost – Multi-unit Plants
 - a. 1 Year
 - b. 3 Year
 - 3. Total Generating Cost – Single-unit Plants
 - a. 1 Year
 - b. 3 Year
 - 4. Total Generating Cost – Fleet Plants
 - a. 1 Year
 - b. 3 Year
 - 5. Total Generating Cost – Non-Fleet Plants
 - a. 1 Year
 - b. 3 Year
- v. Fuel Cost (\$/MWh)
 - 1. Fuel Cost – All Plants
 - a. 1 Year
 - b. 3 Year
 - 2. Fuel Cost – PWRs
 - a. 1 Year
 - b. 3 Year
 - 3. Fuel Cost – BWRs
 - a. 1 Year
 - b. 3 Year
- vi. Capital Cost (\$/Installed Capacity)
 - 1. Capital Cost – All Plants
 - a. 1 Year
 - b. 3 Year
 - 2. Capital Cost – Multi-unit Plants
 - a. 1 Year
 - b. 3 Year
 - 3. Capital Cost – Single-unit Plants
 - a. 1 Year
 - b. 3 Year
- vii. Outage Cost (Most recent completed refueling outage - \$ vs. Days)
 - 1. All Units
 - 2. Multi-unit Plants
 - 3. Single unit Plants
 - 4. Fleet Plants
 - 5. Non-fleet Plants



EUCG Nuclear Book of Benchmarks Table of Contents

B. Staffing Reports (Employees + Baseline Contractors)

- i. Annual Staff
 - 1. All Plants
 - 2. Multi-Unit Plants
 - 3. Single-Unit Plants
- ii. Annual Staff by Installed Capacity
 - 1. All Plants
 - 2. Multi-Unit Plants
 - 3. Single-Unit Plants
- iii. Annual Generating Costs per Person
 - 1. All Plants
 - 2. Multi-Unit Plants
 - 3. Single-Unit Plants
- iv. 5 Year Trend Annual Staff by Quartiles
 - 1. All Plants
 - 2. Multi-Unit Plants
 - 3. Single-Unit Plants

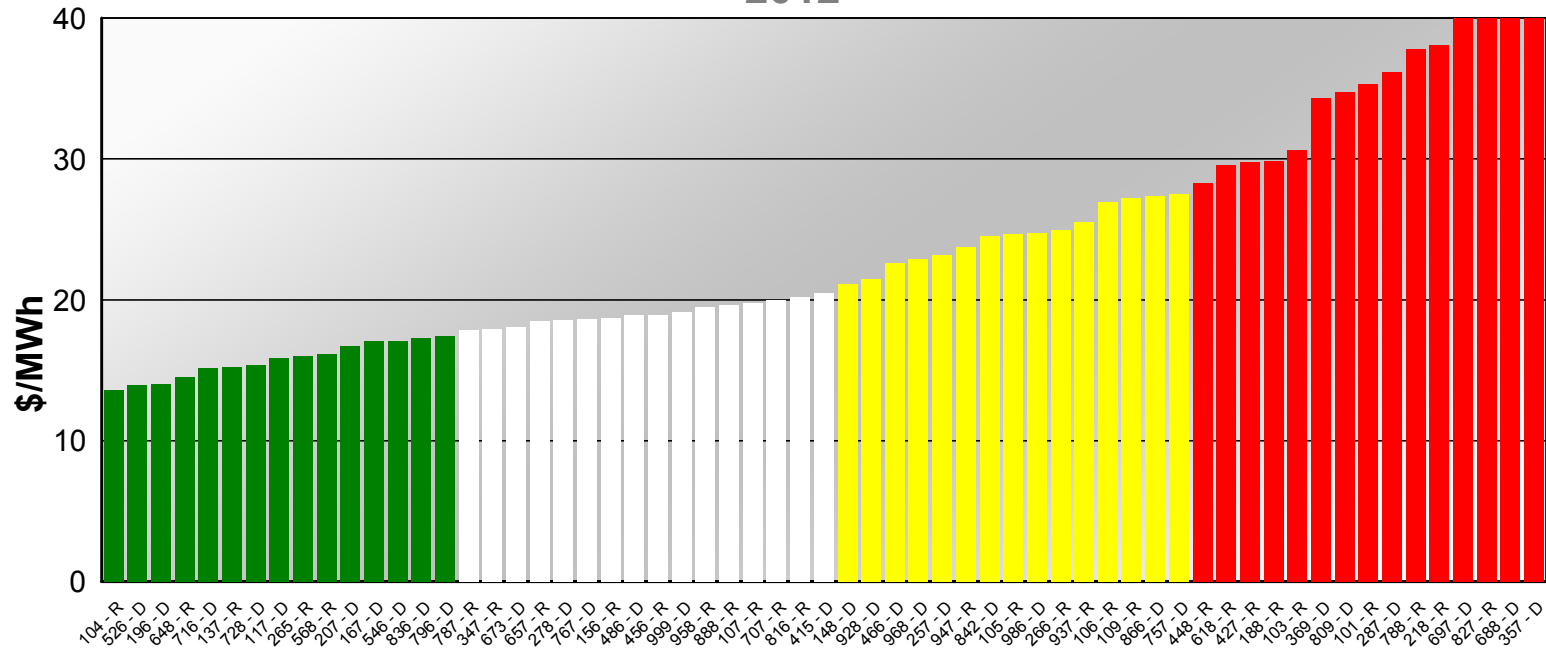
C. Performance

- i. Operating Cost vs. Unit Capability Factor
 - 1. All Plants
 - 2. Multi-Unit Plants
 - 3. Single-Unit Plants
 - 4. Fleet Plants
 - 5. Non-Fleet Plants



Cost Reports

Operating Costs 2012



All U.S. Plants

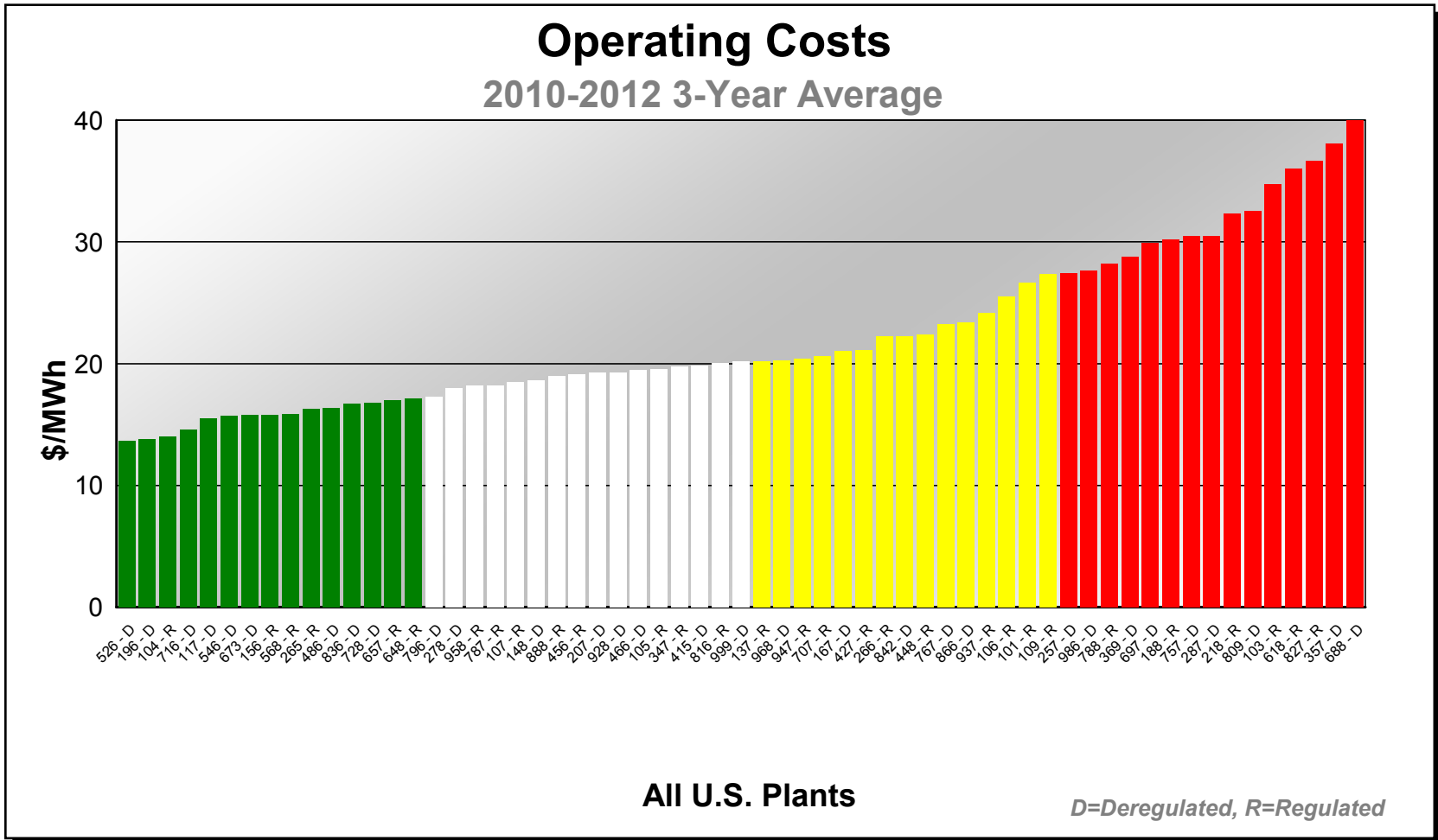
D=Deregulated, R=Regulated

	1st Quartile	2nd Quartile	3rd Quartile	4th Quartile
Value	\$17.66	\$20.46	\$27.90	\$55.07
Min Plant	\$13.60	\$17.88	\$21.11	\$28.32
Max Plant	\$17.43	\$20.46	\$27.48	\$55.07
Average Plant	\$15.69	\$19.05	\$24.57	\$36.56



Operating Costs - All U.S. Plants 2012

104 - R	\$13.60	PWR
526 - D	\$13.96	BWR
196 - D	\$14.02	PWR
648 - R	\$14.49	PWR
716 - D	\$15.16	BWR
137 - R	\$15.20	PWR
728 - D	\$15.37	BWR
117 - D	\$15.86	PWR
265 - R	\$15.98	PWR
568 - R	\$16.12	PWR
207 - D	\$16.68	PWR
167 - D	\$17.04	BWR
546 - D	\$17.08	BWR
836 - D	\$17.29	PWR
796 - D	\$17.43	BWR
787 - R	\$17.88	BWR
347 - R	\$17.94	PWR
673 - D	\$18.06	PWR
657 - R	\$18.52	PWR
278 - D	\$18.56	BWR
767 - D	\$18.62	PWR
156 - R	\$18.73	PWR
486 - D	\$18.88	PWR
456 - R	\$18.95	BWR
999 - D	\$19.12	PWR
958 - R	\$19.50	PWR
888 - R	\$19.62	PWR
107 - R	\$19.75	BWR
707 - R	\$20.01	PWR
816 - R	\$20.20	BWR
415 - D	\$20.46	PWR
148 - D	\$21.11	PWR
928 - D	\$21.46	PWR
466 - D	\$22.63	BWR
968 - D	\$22.90	BWR
257 - D	\$23.22	PWR
947 - R	\$23.77	PWR
842 - D	\$24.54	BWR
105 - R	\$24.68	PWR
986 - D	\$24.76	PWR
266 - R	\$24.99	PWR
937 - R	\$25.49	PWR
106 - R	\$26.92	PWR
109 - R	\$27.22	PWR
866 - D	\$27.33	PWR
757 - D	\$27.48	BWR
448 - R	\$28.32	PWR
618 - R	\$29.56	BWR
427 - R	\$29.78	BWR
188 - R	\$29.82	BWR
103 - R	\$30.63	BWR
369 - D	\$34.32	BWR
809 - D	\$34.72	PWR
101 - R	\$35.29	PWR
287 - D	\$36.18	BWR
788 - R	\$37.84	PWR
218 - R	\$38.09	BWR
697 - D	\$40.16	PWR
827 - R	\$41.40	PWR
688 - D	\$47.28	BWR
357 - D	\$55.07	BWR



	1st Quartile	2nd Quartile	3rd Quartile	4th Quartile
Value	\$17.23	\$20.21	\$27.38	\$43.31
Min Plant	\$13.63	\$17.31	\$20.21	\$27.40
Max Plant	\$17.14	\$20.21	\$27.36	\$43.31
Average Plant	\$15.67	\$19.03	\$22.73	\$32.46

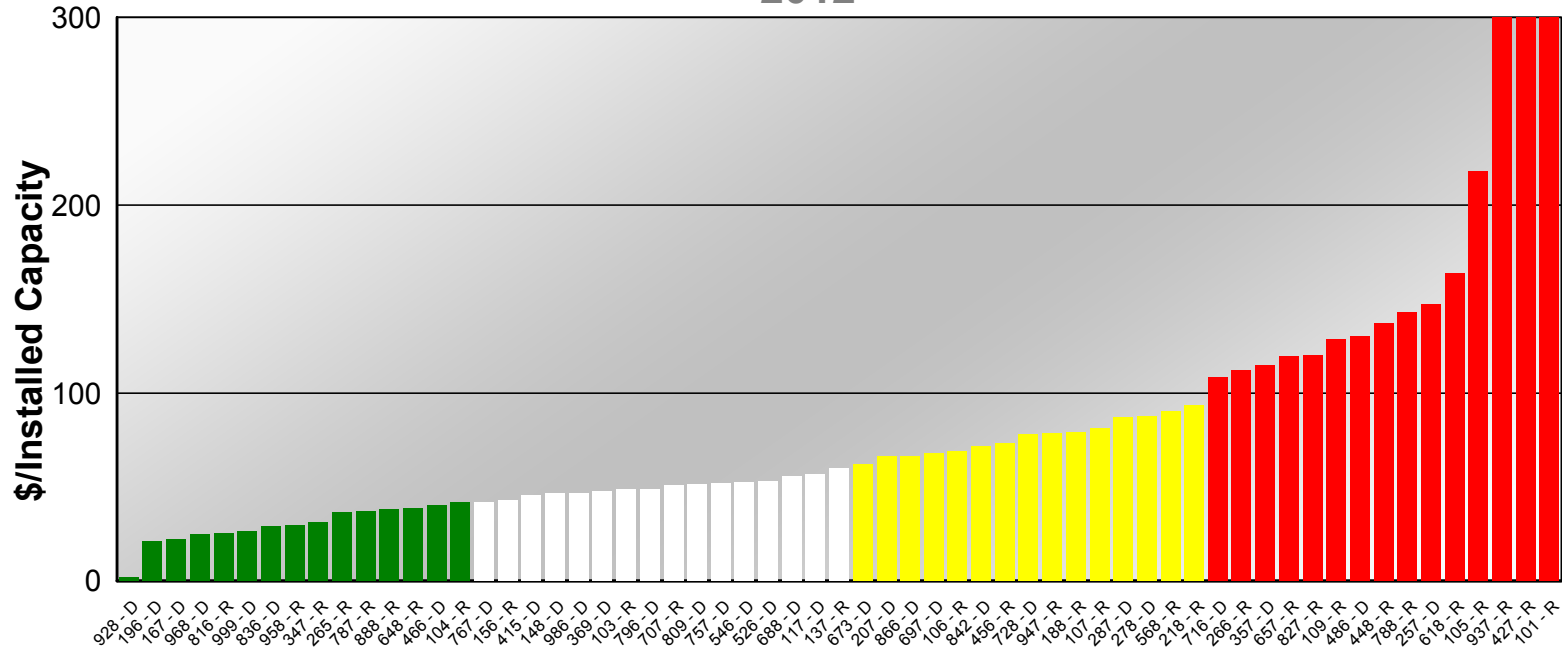


Operating Costs - All U.S. Plants 2010-2012 3-Year Average

526 - D	\$13.63	BWR
196 - D	\$13.82	PWR
104 - R	\$14.02	PWR
716 - D	\$14.63	BWR
117 - D	\$15.52	PWR
546 - D	\$15.76	BWR
673 - D	\$15.78	PWR
156 - R	\$15.79	PWR
568 - R	\$15.83	PWR
265 - R	\$16.32	PWR
486 - D	\$16.35	PWR
836 - D	\$16.68	PWR
728 - D	\$16.82	BWR
657 - R	\$17.01	PWR
648 - R	\$17.14	PWR
796 - D	\$17.31	BWR
278 - D	\$18.03	BWR
958 - R	\$18.20	PWR
787 - R	\$18.21	BWR
107 - R	\$18.49	BWR
148 - D	\$18.66	PWR
888 - R	\$18.98	PWR
456 - R	\$19.14	BWR
207 - D	\$19.28	PWR
928 - D	\$19.30	PWR
466 - D	\$19.48	BWR
105 - R	\$19.55	PWR
347 - R	\$19.74	PWR
415 - D	\$19.80	PWR
816 - R	\$20.04	BWR
999 - D	\$20.21	PWR
137 - R	\$20.21	PWR
968 - D	\$20.25	BWR
947 - R	\$20.41	PWR
707 - R	\$20.62	PWR
167 - D	\$21.07	BWR
427 - R	\$21.10	BWR
266 - R	\$22.24	PWR
842 - D	\$22.25	BWR
448 - R	\$22.42	PWR
767 - D	\$23.27	PWR
866 - D	\$23.36	PWR
937 - R	\$24.17	PWR
106 - R	\$25.53	PWR
101 - R	\$26.63	PWR
109 - R	\$27.36	PWR
257 - D	\$27.40	PWR
986 - D	\$27.65	PWR
788 - R	\$28.20	PWR
369 - D	\$28.76	BWR
697 - D	\$29.91	PWR
188 - R	\$30.23	BWR
757 - D	\$30.50	BWR
287 - D	\$30.50	BWR
218 - R	\$32.29	BWR
809 - D	\$32.56	PWR
103 - R	\$34.73	BWR
618 - R	\$36.03	BWR
827 - R	\$36.67	PWR
357 - D	\$38.09	BWR
688 - D	\$43.31	BWR

Capital Costs

2012



All U.S. Plants

D=Deregulated, R=Regulated

	1st Quartile	2nd Quartile	3rd Quartile	4th Quartile
Value	\$41.83	\$59.93	\$100.96	\$820.26
Min Plant	\$2.00	\$41.99	\$61.91	\$108.36
Max Plant	\$41.67	\$59.93	\$93.56	\$820.26
Average Plant	\$423.49	\$50.02	\$76.76	\$209.14



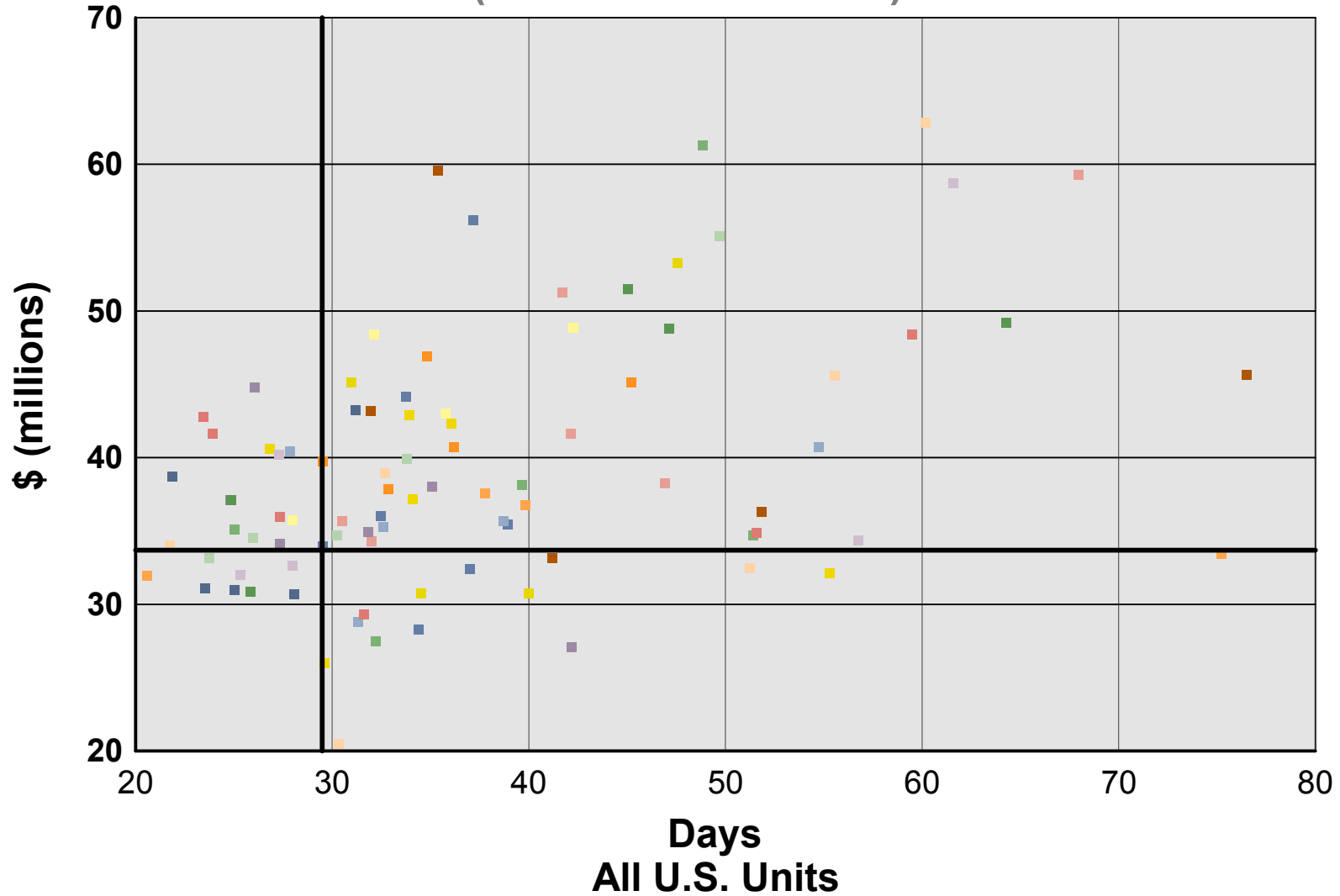
Capital Costs - All U.S. Plants

2012

928 - D	\$2.00	PWR
196 - D	\$21.07	PWR
167 - D	\$22.15	BWR
968 - D	\$24.65	BWR
816 - R	\$25.23	BWR
999 - D	\$26.53	PWR
836 - D	\$29.00	PWR
958 - R	\$29.74	PWR
347 - R	\$30.90	PWR
265 - R	\$36.71	PWR
787 - R	\$36.86	BWR
888 - R	\$37.98	PWR
648 - R	\$38.58	PWR
466 - D	\$40.27	BWR
104 - R	\$41.67	PWR
767 - D	\$41.99	PWR
156 - R	\$42.81	PWR
415 - D	\$45.49	PWR
148 - D	\$46.48	PWR
986 - D	\$46.63	PWR
369 - D	\$47.75	BWR
103 - R	\$48.45	BWR
796 - D	\$48.74	BWR
707 - R	\$50.92	PWR
809 - D	\$51.20	PWR
757 - D	\$52.01	BWR
546 - D	\$52.56	BWR
526 - D	\$53.29	BWR
688 - D	\$55.58	BWR
117 - D	\$56.43	PWR
137 - R	\$59.93	PWR
673 - D	\$61.91	PWR
207 - D	\$66.20	PWR
866 - D	\$66.24	PWR
697 - D	\$68.02	PWR
106 - R	\$68.70	PWR
842 - D	\$71.65	BWR
456 - R	\$73.27	BWR
728 - D	\$77.85	BWR
947 - R	\$78.75	PWR
188 - R	\$79.20	BWR
107 - R	\$81.23	BWR
287 - D	\$86.99	BWR
278 - D	\$87.64	BWR
568 - R	\$90.23	PWR
218 - R	\$93.56	BWR
716 - D	\$108.36	BWR
266 - R	\$112.10	PWR
357 - D	\$114.83	BWR
657 - R	\$119.62	PWR
827 - R	\$120.19	PWR
109 - R	\$128.76	PWR
486 - D	\$130.01	PWR
448 - R	\$137.19	PWR
788 - R	\$143.20	PWR
257 - D	\$147.08	PWR
618 - R	\$163.90	BWR
105 - R	\$218.03	PWR
937 - R	\$314.40	PWR
427 - R	\$359.16	BWR
101 - R	\$820.26	PWR

Refuel Outage Costs vs. Days

(most recent refuel)



1st Quartile
Cost =
\$33,933

1st Quartile Days = 29.5 Days



Refuel Outage Cost vs. Days - All U.S. Units

(most recent refuel)

	Cost	Days
809-1 - D	\$20,457	30.3
767-2 - D	\$25,984	29.6
788-1 - R	\$27,061	42.2
486-1 - D	\$27,499	32.2
707-2 - R	\$28,301	34.4
648-2 - R	\$28,695	91.2
787-1 - R	\$28,768	31.3
707-3 - R	\$29,320	31.6
568-1 - R	\$30,675	28.1 *
357-1 - D	\$30,743	40.0
156-1 - R	\$30,767	34.5
347-1 - R	\$30,886	25.8 *
103-1 - R	\$30,967	25.0 *
278-2 - D	\$31,099	23.6
196-1 - D	\$31,941	20.6 *
278-1 - D	\$31,993	25.3 *
947-1 - R	\$32,112	55.3
265-1 - R	\$32,409	37.0
707-1 - R	\$32,468	51.2
117-1 - D	\$32,640	28.0 *
137-1 - R	\$33,140	41.2
526-1 - D	\$33,164	23.8 *
767-1 - D	\$33,426	75.2
101-1 - R	\$33,519	192.8
842-1 - D	\$33,933	29.5 *
526-2 - D	\$33,996	21.8
657-2 - R	\$34,139	27.3
796-1 - D	\$34,319	32.0
101-2 - R	\$34,358	56.7
257-1 - D	\$34,531	26.0
648-1 - R	\$34,702	51.4
796-2 - D	\$34,714	30.2
728-1 - D	\$34,863	51.6
958-1 - R	\$34,907	31.9
757-1 - D	\$35,093	25.1
958-2 - R	\$35,275	32.6
156-2 - R	\$35,422	38.9
207-2 - D	\$35,655	38.7
415-2 - D	\$35,676	30.5
816-1 - R	\$35,707	28.0
265-2 - R	\$35,947	27.3
716-2 - D	\$36,030	32.5
287-1 - D	\$36,308	51.9
486-2 - D	\$36,781	39.8
673-2 - D	\$37,094	24.8
104-2 - R	\$37,132	24.9
657-1 - R	\$37,176	34.1
456-1 - R	\$37,590	37.8
347-2 - R	\$37,865	32.9
207-1 - D	\$38,016	35.1

	Cost	Days
716-1 - D	\$38,131	39.7
218-1 - R	\$38,232	46.9
117-2 - D	\$38,715	21.9
986-1 - D	\$38,914	32.7
618-1 - R	\$39,738	81.7
148-2 - D	\$39,753	29.5
937-2 - R	\$39,776	109.3
697-1 - D	\$39,889	33.8
546-2 - D	\$40,209	27.3
415-1 - D	\$40,408	27.9
788-2 - R	\$40,471	97.7
196-2 - D	\$40,575	26.8
105-1 - R	\$40,709	36.2
657-3 - R	\$40,732	54.7
167-1 - D	\$41,634	23.9
688-1 - D	\$41,655	42.1
456-2 - R	\$42,310	36.1
928-2 - D	\$42,775	23.4
673-1 - D	\$42,914	33.9
266-2 - R	\$43,019	35.8
104-1 - R	\$43,179	32.0
836-1 - D	\$43,226	31.2
369-1 - D	\$44,178	33.8
466-1 - D	\$44,777	26.1
999-2 - D	\$45,121	45.2
888-2 - R	\$45,150	31.0
266-1 - R	\$45,587	55.5
568-2 - R	\$45,626	76.5
888-1 - R	\$46,903	34.8
842-2 - D	\$48,390	59.5
546-1 - D	\$48,417	32.1
999-1 - D	\$48,810	47.1
107-2 - R	\$48,830	42.3
148-1 - D	\$49,203	64.3
968-2 - D	\$50,326	85.5
188-1 - R	\$50,480	174.5
787-2 - R	\$51,290	41.7
866-1 - D	\$51,498	45.0
106-1 - R	\$53,249	47.6
787-3 - R	\$55,096	49.7
928-1 - D	\$56,190	37.2
427-1 - R	\$56,724	117.5
937-1 - R	\$58,307	146.6
827-1 - R	\$58,692	61.6
968-1 - D	\$59,302	68.0
836-2 - D	\$59,551	35.4
448-1 - R	\$61,305	48.8
107-1 - R	\$62,811	60.2
109-1 - R	\$80,377	97.7

* indicates top performers in 1st Quartile for both cost and days

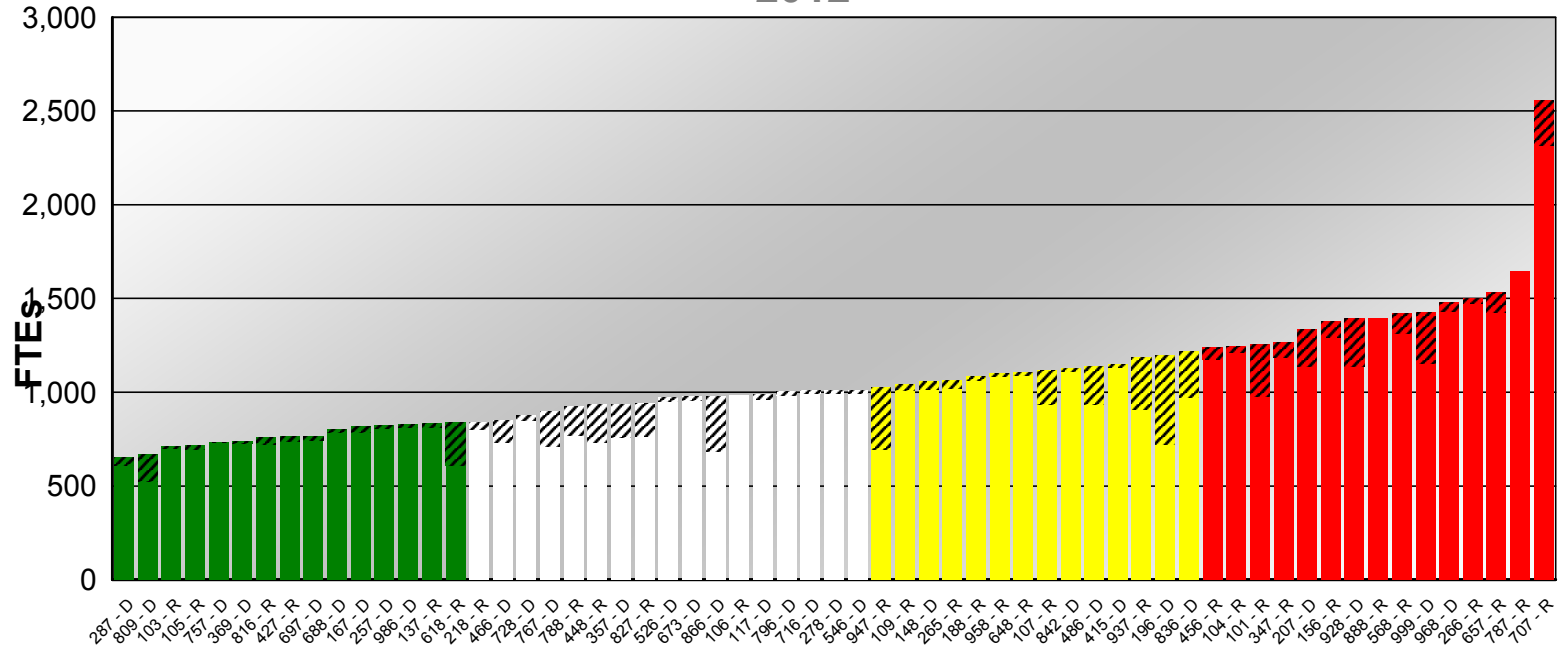


This page intentionally left blank



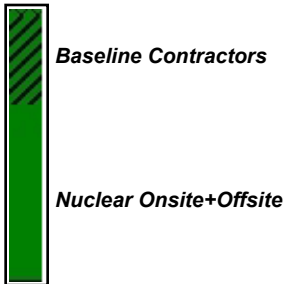
Staffing Reports

Annual Staffing 2012



All U.S. Plants

D=Deregulated, R=Regulated



	1st Quartile	2nd Quartile	3rd Quartile	4th Quartile
Value	840	1,011	1,226	2,556
Min Plant	652	840	1,026	1,237
Max Plant	840	1,011	1,215	2,556
Average Plant	763	949	1,114	1,470



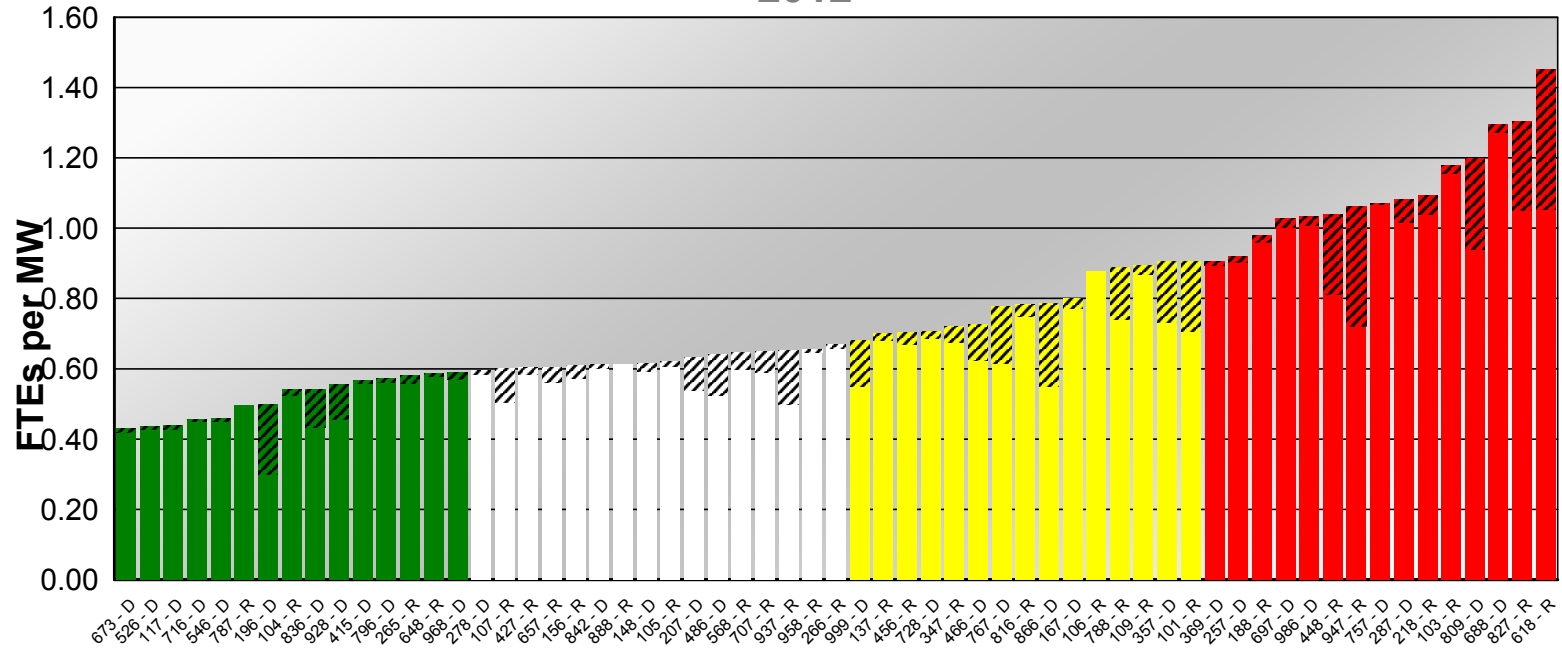
Annual Staffing - All U.S. Plants

2012

	Onsite+Offsite	Baseline Contractors	Total	
287 - D	613	39	652	BWR
809 - D	525	145	670	PWR
103 - R	699	13	713	BWR
105 - R	697	17	714	PWR
757 - D	732	1	733	BWR
369 - D	727	8	736	BWR
816 - R	723	34	757	BWR
427 - R	738	26	764	BWR
697 - D	745	19	765	PWR
688 - D	787	15	802	BWR
167 - D	787	32	819	BWR
257 - D	806	15	821	PWR
986 - D	809	20	829	PWR
137 - R	809	24	833	PWR
618 - R	609	231	840	BWR
218 - R	799	41	840	BWR
466 - D	729	122	851	BWR
728 - D	852	24	876	BWR
767 - D	711	185	896	PWR
788 - R	770	155	925	PWR
448 - R	730	204	934	PWR
357 - D	759	178	937	BWR
827 - R	761	182	943	PWR
526 - D	952	20	972	BWR
673 - D	955	21	976	PWR
866 - D	686	293	979	PWR
106 - R	986		986	PWR
117 - D	963	27	990	PWR
796 - D	984	18	1,002	BWR
716 - D	995	13	1,008	BWR
278 - D	993	18	1,011	BWR
546 - D	995	16	1,011	BWR
947 - R	695	331	1,026	PWR
109 - R	1,010	31	1,041	PWR
148 - D	1,017	41	1,058	PWR
265 - R	1,019	43	1,061	PWR
188 - R	1,063	21	1,084	BWR
958 - R	1,084	15	1,099	PWR
648 - R	1,090	17	1,107	PWR
107 - R	935	182	1,117	BWR
842 - D	1,109	17	1,126	BWR
486 - D	932	205	1,137	PWR
415 - D	1,129	20	1,150	PWR
937 - R	907	279	1,185	PWR
196 - D	721	473	1,194	PWR
836 - D	971	244	1,215	PWR
456 - R	1,176	61	1,237	BWR
104 - R	1,209	33	1,242	PWR
101 - R	979	275	1,254	PWR
347 - R	1,185	80	1,265	PWR
207 - D	1,136	197	1,333	PWR
156 - R	1,291	84	1,375	PWR
928 - D	1,139	252	1,391	PWR
888 - R	1,396		1,396	PWR
568 - R	1,314	107	1,421	PWR
999 - D	1,154	271	1,425	PWR
968 - D	1,432	49	1,481	BWR
266 - R	1,473	26	1,499	PWR
657 - R	1,427	105	1,532	PWR
787 - R	1,644		1,644	BWR
707 - R	2,318	238	2,556	PWR

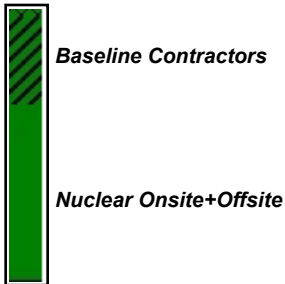
Annual Staffing per Installed Capacity

2012



All U.S. Plants

D=Deregulated, R=Regulated



	1st Quartile	2nd Quartile	3rd Quartile	4th Quartile
Value	0.59	0.67	0.90	1.45
Min Plant	0.43	0.59	0.68	0.90
Max Plant	0.59	0.67	0.90	1.45
Average Plant	0.52	0.63	0.79	1.11



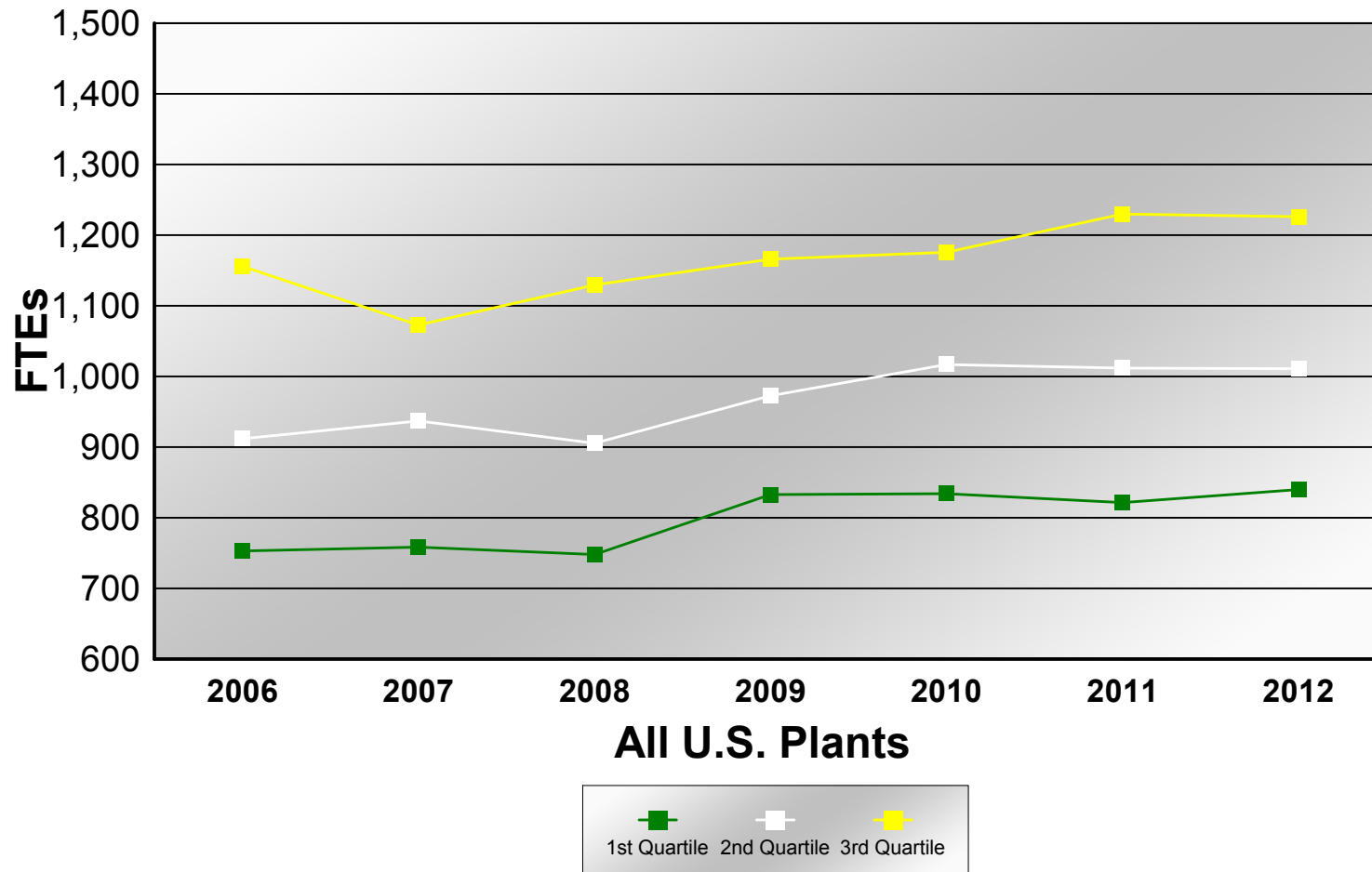
Annual Staffing per Installed Capacity - All U.S. Plants

2012

	Onsite+Offsite	Baseline Contractor	Total	
673 - D	0.42	0.01	0.43	PWR
526 - D	0.43	0.01	0.44	BWR
117 - D	0.43	0.01	0.44	PWR
716 - D	0.45	0.01	0.46	BWR
546 - D	0.45	0.01	0.46	BWR
787 - R	0.50		0.50	BWR
196 - D	0.30	0.20	0.50	PWR
104 - R	0.53	0.01	0.54	PWR
836 - D	0.43	0.11	0.54	PWR
928 - D	0.46	0.10	0.56	PWR
415 - D	0.56	0.01	0.57	PWR
796 - D	0.56	0.01	0.57	BWR
265 - R	0.56	0.02	0.58	PWR
648 - R	0.58	0.01	0.59	PWR
968 - D	0.57	0.02	0.59	BWR
278 - D	0.58	0.01	0.59	BWR
107 - R	0.50	0.10	0.60	BWR
427 - R	0.58	0.02	0.60	BWR
657 - R	0.56	0.04	0.60	PWR
156 - R	0.57	0.04	0.61	PWR
842 - D	0.60	0.01	0.61	BWR
888 - R	0.61		0.61	PWR
148 - D	0.59	0.02	0.62	PWR
105 - R	0.61	0.01	0.62	PWR
207 - D	0.54	0.09	0.63	PWR
486 - D	0.52	0.12	0.64	PWR
568 - R	0.60	0.05	0.65	PWR
707 - R	0.59	0.06	0.65	PWR
937 - R	0.50	0.15	0.65	PWR
958 - R	0.65	0.01	0.66	PWR
266 - R	0.66	0.01	0.67	PWR
999 - D	0.55	0.13	0.68	PWR
137 - R	0.68	0.02	0.70	PWR
456 - R	0.67	0.03	0.70	BWR
728 - D	0.69	0.02	0.71	BWR
347 - R	0.67	0.05	0.72	PWR
466 - D	0.62	0.10	0.73	BWR
767 - D	0.62	0.16	0.78	PWR
816 - R	0.75	0.03	0.78	BWR
866 - D	0.55	0.24	0.79	PWR
167 - D	0.77	0.03	0.80	BWR
106 - R	0.88		0.88	PWR
788 - R	0.74	0.15	0.89	PWR
109 - R	0.87	0.03	0.89	PWR
357 - D	0.73	0.17	0.90	BWR
101 - R	0.71	0.20	0.90	PWR
369 - D	0.89	0.01	0.90	BWR
257 - D	0.90	0.02	0.92	PWR
188 - R	0.96	0.02	0.98	BWR
697 - D	1.00	0.03	1.03	PWR
986 - D	1.01	0.02	1.03	PWR
448 - R	0.81	0.23	1.04	PWR
947 - R	0.72	0.34	1.06	PWR
757 - D	1.07	0.00	1.07	BWR
287 - D	1.02	0.06	1.08	BWR
218 - R	1.04	0.05	1.09	BWR
103 - R	1.16	0.02	1.18	BWR
809 - D	0.94	0.26	1.20	PWR
688 - D	1.27	0.02	1.30	BWR
827 - R	1.05	0.25	1.30	PWR
618 - R	1.05	0.40	1.45	BWR

Total Staffing Trend

Including Baseline Contractors





Total Staffing Trend - All U.S. Plants

(includes Baseline Contractors)

	Onsite+Offsite	Baseline Contractors	Total	1st Quartile	2nd Quartile	3rd Quartile
2006	49,303	6,960	56,264	753	912	1,156
2007	51,971	7,631	59,602	758	937	1,073
2008	53,324	6,851	60,175	748	905	1,129
2009	58,172	6,363	64,535	833	973	1,166
2010	58,291	5,972	64,263	834	1,017	1,176
2011	58,840	5,900	64,740	822	1,012	1,230
2012	59,379	5,855	65,233	840	1,011	1,226



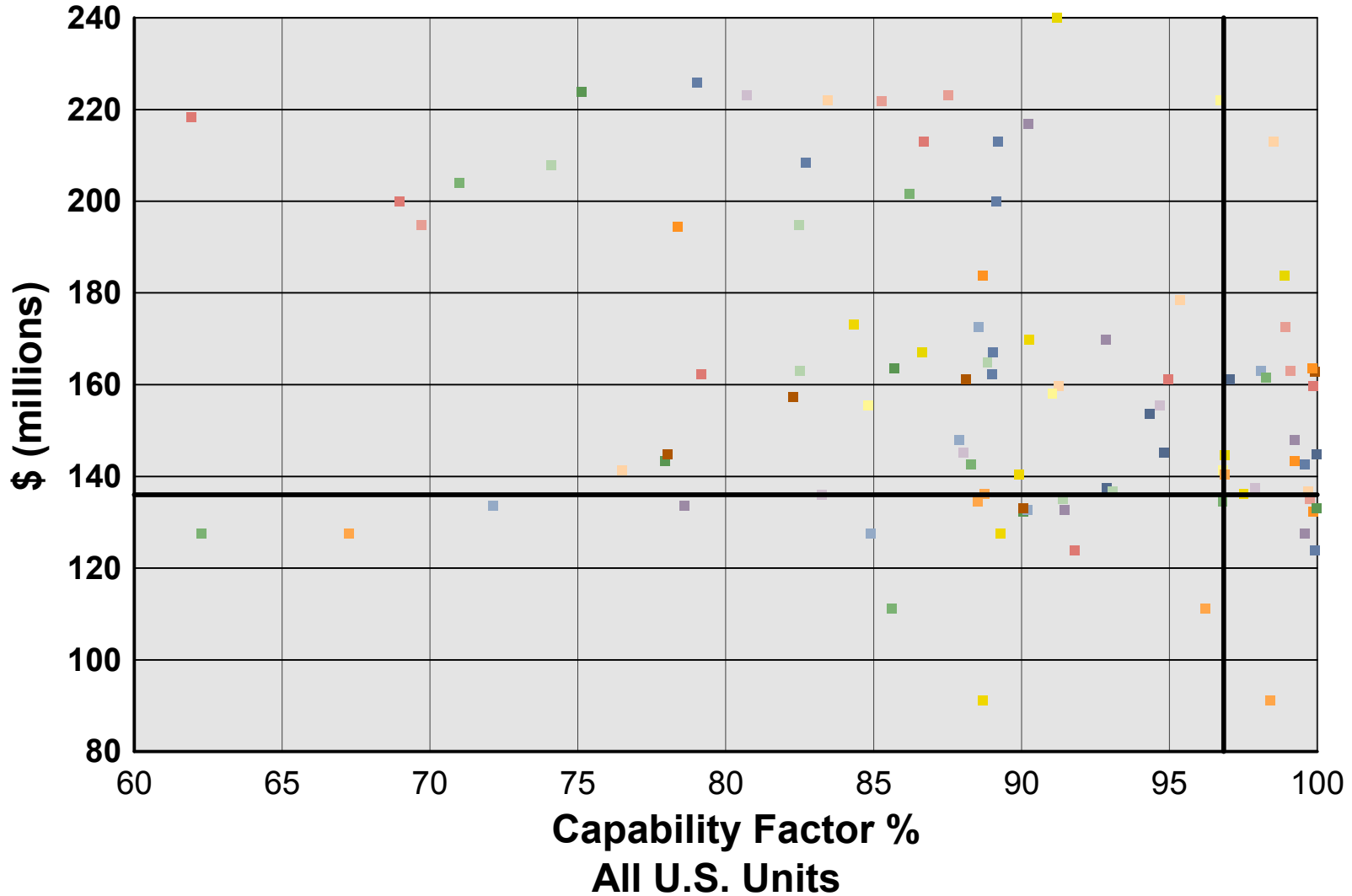
This page intentionally left blank



Performance Reports

Operating Cost vs. Unit Capability Factor

2012



1st Quartile
Cost =
\$136,060

1st Quartile Capability Factor = 96.86 %



Operating Cost vs. Unit Capability Factor - All U.S. Units

2012

	Operating Cost	Capability Factor	
767-1 - D	\$91,134	98.42%	*
767-2 - D	\$91,134	88.69%	
648-1 - R	\$111,110	85.62%	
648-2 - R	\$111,110	96.21%	
265-1 - R	\$123,873	99.91%	*
265-2 - R	\$123,873	91.80%	
657-1 - R	\$127,493	89.29%	
657-2 - R	\$127,493	99.57%	*
657-3 - R	\$127,493	84.90%	
937-1 - R	\$127,567	62.27%	
937-2 - R	\$127,567	67.25%	
347-1 - R	\$132,412	90.07%	
347-2 - R	\$132,412	99.86%	*
958-1 - R	\$132,737	91.45%	
958-2 - R	\$132,737	90.19%	
104-1 - R	\$133,037	90.05%	
104-2 - R	\$133,037	99.99%	*
788-1 - R	\$133,592	78.60%	
788-2 - R	\$133,592	72.14%	
486-1 - D	\$134,564	96.81%	
486-2 - D	\$134,564	88.53%	
796-1 - D	\$135,112	99.75%	*
796-2 - D	\$135,112	91.41%	
101-1 - R	\$136,060	36.20%	
101-2 - R	\$136,060	83.24%	
456-1 - R	\$136,246	88.76%	
456-2 - R	\$136,246	97.51%	
526-1 - D	\$136,804	93.07%	
526-2 - D	\$136,804	99.69%	
278-1 - D	\$137,404	97.89%	
278-2 - D	\$137,404	92.89%	
196-1 - D	\$140,434	96.86%	
196-2 - D	\$140,434	89.92%	
107-1 - R	\$141,297	76.48%	
107-2 - R	\$141,297	96.82%	
716-1 - D	\$142,604	88.28%	
716-2 - D	\$142,604	99.57%	
148-1 - D	\$143,310	77.94%	
148-2 - D	\$143,310	99.24%	
618-1 - R	\$144,563	96.88%	
568-1 - R	\$144,838	99.98%	
568-2 - R	\$144,838	78.05%	
117-1 - D	\$145,228	88.04%	
117-2 - D	\$145,228	94.82%	
207-1 - D	\$147,837	99.22%	
207-2 - D	\$147,837	87.89%	
103-1 - R	\$153,638	94.33%	
546-1 - D	\$155,400	84.82%	
546-2 - D	\$155,400	94.68%	
287-1 - D	\$157,289	82.29%	

	Operating Cost	Capability Factor
816-1 - R	\$158,002	91.03
167-1 - D	\$159,712	99.87
809-1 - D	\$159,763	91.25
728-1 - D	\$161,251	94.97
836-1 - D	\$161,274	97.05
836-2 - D	\$161,274	88.11
757-1 - D	\$161,506	98.26
842-1 - D	\$162,180	89.00
842-2 - D	\$162,180	79.18
137-1 - R	\$162,893	99.93
787-1 - R	\$163,034	98.10
787-2 - R	\$163,034	99.10
787-3 - R	\$163,034	82.50
999-1 - D	\$163,633	85.69
999-2 - D	\$163,633	99.82
257-1 - D	\$164,873	88.84
156-1 - R	\$166,970	86.63
156-2 - R	\$166,970	89.04
673-1 - D	\$169,782	90.26
673-2 - D	\$169,782	92.84
415-1 - D	\$172,610	88.55
415-2 - D	\$172,610	98.93
947-1 - R	\$173,079	84.34
986-1 - D	\$178,504	95.37
888-1 - R	\$183,764	88.70
888-2 - R	\$183,764	98.90
105-1 - R	\$194,491	78.38
968-1 - D	\$194,724	69.72
968-2 - D	\$194,724	82.48
928-1 - D	\$200,034	89.15
928-2 - D	\$200,034	68.97
448-1 - R	\$201,682	86.22
188-1 - R	\$204,076	71.00
697-1 - D	\$207,940	74.09
369-1 - D	\$208,326	82.72
707-1 - R	\$213,015	98.53
707-2 - R	\$213,015	89.22
707-3 - R	\$213,015	86.70
466-1 - D	\$216,901	90.23
427-1 - R	\$218,443	61.93
218-1 - R	\$221,798	85.28
266-1 - R	\$222,022	83.44
266-2 - R	\$222,022	96.72
827-1 - R	\$223,044	80.72
688-1 - D	\$223,072	87.53
866-1 - D	\$223,820	75.13
109-1 - R	\$225,783	79.04
106-1 - R	\$246,885	91.20
357-1 - D	\$285,061	54.03

* indicates top performers in 1st Quartile for both Cost and Capability Factor